

Getting Started with enei

Introduction

We're delighted to welcome you to our community of forward-thinking member organisations who are committed to creating diverse and inclusive workplaces. This resource serves as your starting block for launching into the enei experience.

Who we are

The Employers Network for Equality and Inclusion (enei) is a UK-based, not-for-profit organisation which helps employers build diverse teams and inclusive cultures through membership, training, and consultancy services. A truly inclusive workplace enables every team member to unleash their full potential. Our human rights-centred approach to diversity, equality, and inclusion (DEI) empowers your organisation to cultivate an environment of openness, honesty, and innovation.

Get ready to embark on a transformative journey that goes beyond mere compliance, propelling your company toward a culture of belonging and innovation. At enei, the unique perspectives, experiences, and commitments of each individual are not just welcomed; they are the driving force behind our collective mission to create inclusive workplaces where everyone can thrive.



Register for the website

A screenshot of the enei website's registration page. The page has a white background with a dark blue header containing the enei logo and navigation links. The main heading is "Register". Below it, there is a paragraph of text explaining the registration process. The form itself consists of several input fields: "First name * (required)", "Last name * (required)", "Organisation * (required)", "Job Title * (required)", "Telephone * (required)", "E-mail * (required)", "Confirm E-mail", and "Email * (required)". A "Submit" button is at the bottom of the form.

Congratulations! Your organisation has purchased a membership with enei and this has opened up a treasure trove of DEI resources and materials carefully curated by enei's DEI professionals.

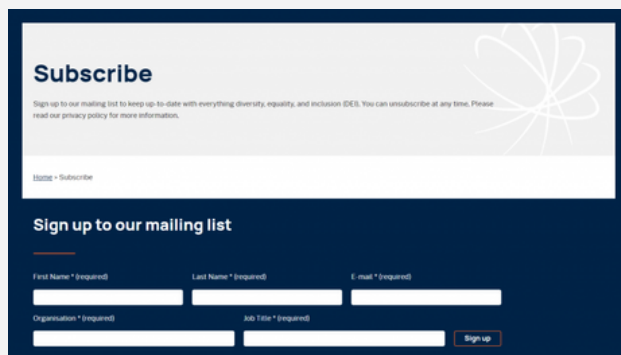
To unlock the full potential of your membership and gain access to our exclusive member content, you will need to take a moment to register your account. Registering will grant you seamless access to our comprehensive library of resources.

Simply click [here](#) to be taken to the registration page.

Please ensure you complete all the required fields on the online form.

Once submitted, your application will be approved, and you will receive an email containing instructions on how to log in to your new account.

Register for the member newsletter



Subscribe

Sign up to our mailing list to keep up-to-date with everything diversity, equality, and inclusion (DEI). You can unsubscribe at any time. Please read our privacy policy for more information.

[Home](#) > [Subscribe](#)

Sign up to our mailing list

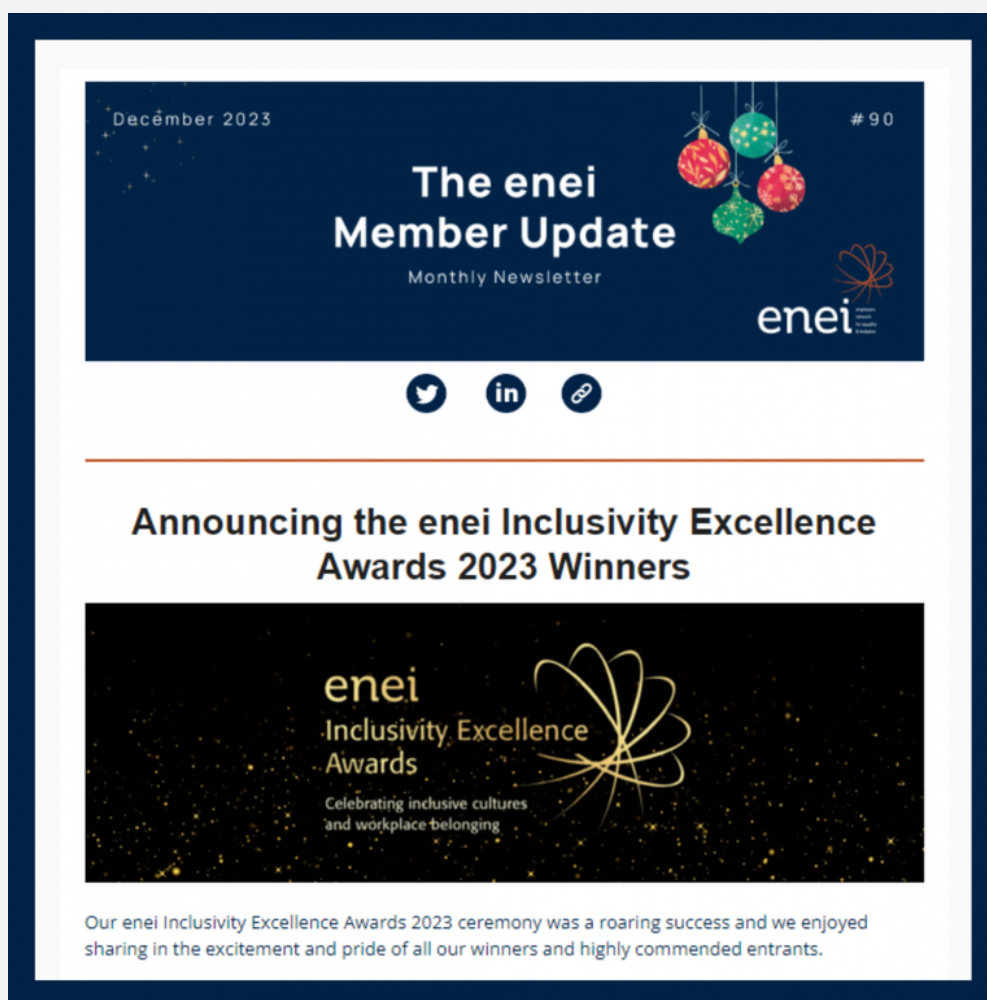
First Name * (required) Last Name * (required) E-mail * (required)

Organisation * (required) Job Title * (required) [Sign up](#)

[Sign up to our mailing list](#) to stay at the forefront of everything diversity, equality, and inclusion.

By subscribing, you will be the first to receive exclusive monthly updates on our latest resources and upcoming events, ensuring you never miss a thing in the ever-evolving landscape of DEI.

Signing up is quick and easy, and you can opt-out at any time.



Got a comment?
E-mail: info@enei.org.uk

Register for events

Explore our range of exciting interactive member-only events, which we hold throughout the year.

The events can be accessed by all staff from our member organisations and are led by one of our knowledgeable Diversity and Inclusion Leads.

We also hold occasional in-person networking gatherings, each tailored to spotlight a specific sector or region.

Upcoming events at enei



Disability and Careers: Roles Beyond the Workplace
14 December - 11:00 am - 12:00 pm
Join us for this insightful webinar where we discuss key principles for supporting carers in the workplace, thereby fostering a more inclusive and supportive work environment.



Putting DEI First: Making the Business Case
18 January 2024 - 11:00 am - 12:00 pm
How can you create a strong business case for your organisation to ensure DEI is taken seriously?

Register for our upcoming events here

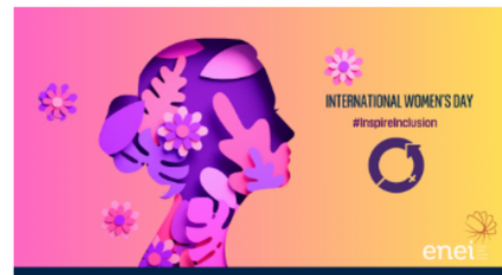
You can view our upcoming events [here](#).

Click on the link at the bottom of the event page to attend the event and register your details.

Prior to the event, you will receive a link via email which you can use to join the webinar on the scheduled day.

International Women's Day: Inspire Inclusion

6 March - 11:00 am - 12:00 pm



How do we #InspireInclusion?

Join our virtual panel event where our guest speakers discuss the imperative steps required to create a more inclusive workplace environment for women.

Why should I attend this event?

This objectives of this session will be to:

- Enhance understanding of gender-related challenges, learn about current issues and their implications
- Empower attendees with practical strategies for promoting diversity, equity, and inclusion.
- Implement strategies to cultivate a supportive environment for all employees

Who should attend this event?

DEI and HR Professionals, Line Managers

Who are our guest speakers?

Claudia Brind-Woody, Managing Director, IBM



Claudia has held a range of senior positions in IBM and is currently Managing Director for the Kyndryl Partnership in the UK and Ireland. She is an accomplished speaker who has led keynote speeches on LGBT diversity across the world and has also contributed to several books including "Out & Equal at Work: From Closet to Corner Office".

Claudia has a history of working with advocacy groups and currently serves on the Advisory Board of Workplace Pride in Amsterdam and Toyota Motors Europe Diversity & Inclusion Advisory Board.

The positive impact of her work has been recognised publicly. In 2020, she was named as a Top LGBTQ+ Entrepreneurs, Executives, and Thought Leaders, and one of 30 Influential LGBTQ+ Leaders. In 2021, she was named on a list of 27 LGBTQ+ Scientists and Tech Leaders Shaping Our Future, and on Channel Futures global DB&I 101 list.

Jacqui Gavin BEM, Founder and CEO of 5 Senses of Inclusion



Jacqui Gavin is a renowned advocate for diversity and inclusion, particularly in the LGBTQ+ community. Her tireless efforts have earned her the British Empire Medal.

Other resources

All enei members have exclusive access to a wide range of [resources](#), including [case studies](#), [employer guides](#), [infographics](#), [quick guides](#), [calendars](#), and more.

Our extensive library of resources empowers you with the tools you need to stay in sync with the changing face of diversity and inclusion.

We also have a range of [hubs](#) which are continually being improved, which provide an overview of a particular subject area with curated links to a wealth of resources tailored exclusively for members.

As a member, you will also be able to access [video recordings](#) from our past events, providing you with a valuable archive of insights and knowledge.

Please get in touch with your account manager if you have any feedback or further questions.

| | |
|--|---|
| <p>QUICK GUIDE</p> <p>Health Adjustment Passports in the Workplace</p> <p>This guide offers an introduction to Health Adjustment Passports (HAPs), which are tools for supporting employees with health conditions or disabilities in the workplace.</p> <p>20 December 2023</p> | <p>QUICK GUIDE</p> <p>Addressing Islamophobia in the Workplace</p> <p>The purpose of this resource is to offer employers insight into addressing Islamophobia in the workplace.</p> <p>20 December 2023</p> |
| <p>QUICK GUIDE</p> <p>World Braille Day</p> <p>This quick guide explains the significance of World Braille Day.</p> <p>15 December 2023</p> | <p>QUICK GUIDE</p> <p>Non-Binary Equality in the Workplace</p> <p>The purpose of this quick guide is to offer some suggestions on how to embed equality and inclusion for non-binary employees and candidates.</p> <p>13 December 2023</p> |
| <p>QUICK GUIDE</p> <p>International Day for the Elimination of Violence Against Women</p> <p>This quick guide can help inform your workplace about the International Day for the Elimination of Violence against Women.</p> <p>13 December 2023</p> | <p>QUICK GUIDE</p> <p>Sexual Violence and Abuse - Supporting Employees</p> <p>The purpose of this resource is to offer employers guidance on how to support employees who have reported or experienced sexual abuse.</p> <p>12 December 2023</p> |
| <p>VIDEO</p> <p>Disability and Carers: Roles Beyond the Workplace</p> <p>During this insightful webinar we discussed key principles for supporting carers in the workplace, thereby fostering a more inclusive and supportive work environment.</p> <p>14 December 2023</p> | <p>VIDEO</p> <p>Using the Right Words: Inclusive Communication</p> <p>Want to keep up-to-date with evolving DEI terminology? During this session, we discussed good practice approaches to inclusive communication.</p> <p>6 December 2023</p> |
| <p>VIDEO</p> <p>Trans Awareness Week: Q&A Interview with Max Siegel</p> <p>enei marked #TransAwarenessWeek with a special Q&A interview featuring guest speaker and LinkedIn Top 10 Voices, Max Siegel.</p> <p>14 November 2023</p> | <p>VIDEO</p> <p>AI's Double-Edged Sword for Workplace DEI</p> <p>This session explored the transformative role of AI in DEI, uncovered its potential in boosting employee wellbeing, and delved into the critical concerns shaping its future.</p> <p>7 November 2023</p> |